

# Te Karere a Hauiti

## NGĀTI HAUITI NEWS

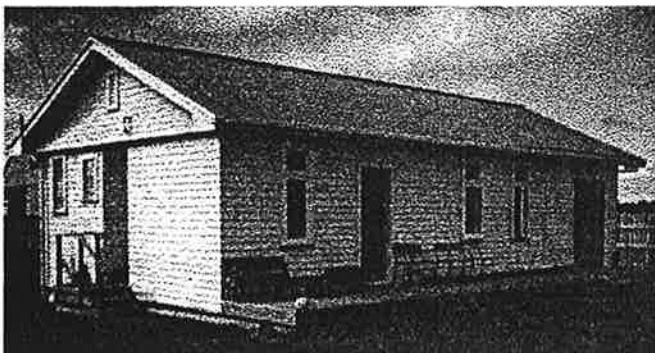
*Ko Ruahine te pae maunga, ko Rangitīkei te awa, ko Tākitimu te waka, ko Ngāti Hauiti te iwi. E ngā whānau, e ngā hapū o Ngāti Hauiti, tēnā koutou, tēnā koutou, tēnā koutou katoa. Ka nui te mihi ki a koutou. E ngā tini aituā, haere ki tua o te ārai. Heoi anō.*

*Ruahine is the mountain range, Rangitīkei is the river, Tākitimu is the canoe and Ngāti Hauiti is the tribe. To the families and sub-tribes of Ngāti Hauiti, greetings and salutations to you all. To our departed ones, go beyond the veil of darkness. Enough.*

## Te Rūnanga o Ngāti Hauiti

**A**s we welcome in another year, we look back to some of the achievements over the past 6 months.

One of the key milestones achieved was the completion of the **resource centre** situated on the Rātā Marae complex. While there is some minor finishing work still to go, it has been operational for the past four months. Many thanks to the volunteers who laboured to get it ready in time for the opening. It was a mammoth task well done.



Another key to re-establishing our Iwi infrastructure is to establish a **Topu Whenua Trust** to be known as the Rākautanga Trust. This Trust will be responsible for growing the economic wealth of Ngāti Hauiti and will hold our Iwi assets in trust. A hui to discuss the matter is planned for March (see Pānui section).

The time is coming to up-date the Iwi **contacts data base**. It contains approximately 400 names and addresses of Ngāti Hauiti members and has been used solely to send Pānui out to the whānau. Many people have moved on without letting us know so it is obviously difficult to keep people in informed of what's happening. A couple of dedicated volunteers will be working on the data base in the third week of April so if you have any spare time to help out please let us know. And don't forget to let us know your e-mail address if you have one!

As explained in a previous newsletter, Ngāti Hauiti directly receive annual **fishing quota** from Te Ohu Kaimoana. This year we joined with three neighbouring Iwi to sell our quota which assisted in doubling our profit from the lease round. Recently it was decided to allocate the profit towards hapū development and developing an economic base.

The annual **management plan** for the Rūnanga was completed which provides an overview of the Rūnanga's general position including its values base, proposed activities/projects and organisational profile. Copies are available upon request.

## Te Maru o Ruahine Trust

**T**he Trust welcomes Mina Bourke into the position of social worker for Ngāti Hauiti. Mina has recently completed a diploma in social work at Whanganui Polytech. She is working hard out on re-establishing our client

base and organising the next Rangatahi hui planned in April. (see Pānui section)

The substance abuse project that looks at pathways into and out of substance abuse for Rangatahi has got off to a good start with the appointment of Stephen Tauwhare (Ngāi Tahu) and Heather Gifford (Ngāti Hauiti & Te Āti Hau) as researchers on the team. They join Utiku Potaka, Maureen Holdaway and Joanne Eagle.

Another project completed was the economic and resource generation strategy which outlined a novel approach towards addressing employment and training.

In the last week of January, almost 20 of our whānau rafted or canoed down the Rangitikei River for four days. The hīkoi started at Omatane and ended at Rātā. It was an experience of a life time and was enjoyed so much by the participants that it was decided to run another one between boxing day and new years eve 1999. Please register your interest early as numbers will be limited because of a shortage of river equipment. Rangi Hawira, Peter Williamson, Nevelle Lomax and Ben Johnston are picture below.



## Iwi Happenings

We have another busy couple of months ahead of us so please take careful note of dates and venues because in most cases this will be the only notice!

PĀNUI

PĀNUI

PĀNUI

### Rākautāonga Trust

The Rākautāonga Trust is being established under the Ture Whenua Māori Land Act. Its primary

role will be to hold in trust and manage the assets of Ngāti Hauiti. The hui will be of particular interest to whānau participating in economic development. It will be held on the 20<sup>th</sup> March '99 starting at 11.30am, Rātā Marae.

### Kapa Haka

We now have a number of Ngāti Hauiti waiata under belts however a lot more work needs to go into learning the patere composed by Uncle Wilson Winiata. The next session is on 20<sup>th</sup> & 21<sup>st</sup> of March '99 beginning at 5pm at Otara camp site, Ohingaiti.

### Rangatahi Hui (Secondary School Age)

The next Rangatahi hui will be held between the 8<sup>th</sup> & 11<sup>th</sup> April '99 starting at 5.30pm at the Rātā Marae. All whānau with Rangatahi are encouraged to attend and participate. For those whānau who regularly send their rangatahi, you will be receiving a separate pānui. Any new comers should call Mina Bourke at the resource centre for more details.

### Wānanga

We have now had wānanga at the Rātā and Winiata Maraes and now plan to move them around the Ngāti Hauiti rohe. Therefore the next wānanga will be held at the Kawhatau Outdoor Recreation Centre, Kawhatau Valley Road on the 24<sup>th</sup> & 25<sup>th</sup> April '99 commencing at 5pm. Like previous wānanga we will be covering whakapapa and history of the area.

### Rūnanga Meeting

The next Rūnanga meeting will be on Saturday 8<sup>th</sup> of May '99 starting at 10am at the Rātā Marae. All whānau are encouraged to attend and participate.

## Rātā Marae

**T**he Marae has undergone some major transformations over the past year or so which started with the agreement from the Tumihau Trust (representing the children of Tumihau Jnr & Loisie Potaka) to gift the 'carpark' paddock to the marae. We are very appreciative of this gift.

The first facility to go in was a playground for pre-schoolers that adjoins the kōhanga reo while the resource centre was also re-located onto the

marae by the Rūnanga. The old power supply was replaced and more recently a new driveway was installed which brings vehicles directly to the front of the marae. The marae itself now has a solid shelter for the maunuhiri paepae.

✉ Te Rūnanga o Ngāti Hauiti, PO Box 15  
Huntermville ☎: (06) 3228765 or 0800 HAUITI